



PARADIGM® REFERENCE

ART EMBRACING SCIENCE™ | 5.0

## PARADIGM® REFERENCE

**T**he success of Paradigm® Reference since its introduction in 1996 has been nothing short of astonishing! Never before has a range of high-end speakers been so quickly embraced by listeners and critics alike.

Although perhaps not apparent at first, quite often the most demanding aspect of speaker design is daring to change. It would be easy, coddled by the accolades and awards, to become complacent and rest on the laurels of critical favor. In true audiophile fashion, however, our engineers persist, seeing room for improvement and opportunity for refinement in the planning and design of each new generation of Paradigm® Reference speakers.

From the beginning, we have taken a cost-no-object approach to speaker design, using only the most sophisticated technologies. Our success can be heard in every sound, every glorious note. Paradigm® Reference speakers are supremely neutral, natural, detailed and clear. Imaging is spacious and open. Localization, unerringly precise. And timbral accuracy, as always, is solid across the model line.

For music or home theater there is no more sonically coherent choice than Paradigm® Reference. Our speakers transcend an assembly of enclosed high-end components to bring you closer to the original sound than you ever thought possible.



For an unprecedented seventeen consecutive years Paradigm® has been rated **#1 in Price/Value** by the distinguished publication **inside track**.\*

\*An annual independent nationwide survey of consumer electronics specialist retailers and custom installers.



For more information visit our website at  
[www.paradigm.com](http://www.paradigm.com)





Shown in Rosenut: Studio 100, Studio CC-690



# MILLENIA™ SERIES



Shown in Polished Aluminum:  
Millenia™ 300, Millenia™ 30

*"TOWERS OF POWER ... a swanky high-performance system that works in even the most style-conscious homes."*

*— Michael Trei, Sound & Vision on the Millenia™ 300 system\**

**M**illenia™ speakers offer sophisticated state-of-the-art Paradigm® Reference technology wrapped in a sleek lifestyle design to complement today's flat-panel televisions.

Just like their more traditionally styled counterparts, Millenia™ speakers offer breathtaking musical reproduction that lays bare the very essence of the original performance! And that complex mix of dialog, music and action effects that make up a movie's soundtrack? Millenia™ delivers it with a realism that no other high-end lifestyle system can! *Sound and Vision* magazine had this to say about the Millenia™ Series: "... beautiful and chic ... dynamic and powerful ... quick and highly detailed ... superb imaging ... dialogue remained resolutely clear ... no sign of distress even in the most dynamic passages."\*

The slim Millenia™ 20 Trio takes lifestyle design a step further! Three main speakers in one fabulously sleek lifestyle cabinet—a left front speaker, a right front speaker and a center channel—it offers a superb single-cabinet alternative for those who want to streamline and simplify their music and home theater setup without sacrificing even an ounce of high-end sound quality.

Although the Trio can hold its own when it comes to delivering the lower frequencies with clean, clear, well-extended bass performance, just like all Millenia™ speakers it is designed to be used with a subwoofer. For a truly unforgettable music and home theater experience, pair it with a Paradigm® Reference Seismic™ subwoofer.



Shown in Black Chrome: Millenia™ 20 Trio



## MILLENNIA™ SERIES

### High-Frequency Drive Units

Like all Paradigm® Reference high-frequency drivers, Millennia™ drivers exhibit breathtaking timbral clarity and a transparency that is comparable to the very best electrostatic or ribbon designs. Exceptionally smooth, vividly detailed and free of any spurious resonances, their performance is simply unmatched in high-end lifestyle design.

- **S-PAL™ Satin-Anodized Pure-Aluminum Domes:**  
Deep-anodized for exceptional rigidity and paired with a low-mass treated textile suspension. Highs are spacious, clear, silky smooth and exceptionally well extended.
- **Rigid High-Pressure Die-Cast Aluminum Chassis:**  
Eliminate mechanical flexing and ringing and effectively dissipate heat—a tweeter's foremost adversary.
- **Critical Coupling of Phase-Alignment Bridge and Elevated Dome:**  
Extremely flat frequency response with optimal off-axis dispersion.
- **Dual Super Neodymium Magnets and Advanced Motor Structures:**  
Computer-optimized using Finite Element Analysis (FEA), a highly advanced tool for component design, to generate intense energy in the gap. Power handling and output linearity are superb under all conditions.
- **High-Power Apical™ Formers:**  
High-power, high-temperature voice coils and ventilated Apical™ formers ensure high-power handling, low distortion and long-term reliability.





Shown in Black Chrome:  
Millenia™ 30

## Midrange, Bass/Midrange, and Bass Drive Units

Our ears are uniquely attuned to lower treble and midrange frequencies—we instinctively recognize sound anomalies; deviations from what is “natural.” Paradigm engineers know this, and in their exhaustive testing, re-testing, listening and learning, they have developed drivers that have no equal in the high-end lifestyle speaker category ...

- **MLP™ Mica-Loaded-Polymer Midrange and Bass/Midrange Cones:**  
High stiffness-to-mass ratio of polypropylene and the exceptional damping properties of the injected Mica ensure performance that is accurate, lifelike, wonderfully detailed and critically revealing.
- **HTD™ Heat Transfer and Dissipation System—Our Proprietary Design:**  
High-pressure die-cast aluminum chassis cradles the entire neodymium magnet structure. The resulting increase in surface area provides for exceptional heat transfer and dissipation. Exterior heatsink fins reinforce the cooling and dissipation process.
- **Solid-Aluminum Phase Plugs:**  
Not only do they look good, but they maintain linear response and play an important role in improving airflow for significant gains in heat dissipation.
- **Overdesigned Nitrile-Butadiene Rubber (NBR) Surrounds and High-Temperature Nomex™ Spiders:**  
NBR is known for its excellent damping properties and reliability (particularly under extreme conditions). The flat Nomex™ polyamide spider promotes extended, very linear driver excursion and ultra-low distortion.
- **Precision-Engineered Mineral-Filled Polypropylene Bass Cones:**  
The injection of mineral into the polypropylene ensures a high stiffness-to-mass ratio and excellent internal damping. The result is high output with minimal distortion and excellent extension—free of cone standing waves and micro distortions.
- **Oversize Magnet Assemblies with Symmetrical Focused Field Geometry:**  
Low distortion and unparalleled linearity even under extreme conditions.
- **Advanced Motor Structures:**  
Lightweight high-temperature copper-clad aluminum-wire voice coils. A rigid, low-mass design wound on vented Kapton® polyamide formers. Excellent linear response regardless of cone excursion.

## High-End Touches

- **Ultra-Slim Extruded-Aluminum Enclosures:**  
At a fraction of the thickness of typical wood enclosures, the extruded design affords all of the benefits of a larger speaker in a significantly slimmer package, with no noticeable internal cabinet resonances. The dramatic side curvature not only adds a dash of high-end flash, it also provides additional structural integrity.
- **Premium Finishes:**  
Millenia™ speakers come in two highly polished premium finishes—Black Chrome and Polished Aluminum.
- **High-Velocity Low-Noise Aluminum Ports:**  
Bass efficiency and minimum turbulence distortion for cleaner and more articulate bass response.
- **Magnetically Attached Speaker Grilles**
- **Tempered Glass Base on Floorstanding Models**

Millenia™ speakers are designed to be used with a subwoofer. For unforgettable music and home theater performance add a Paradigm® Reference Seismic™ subwoofer to complete your Millenia™ system.



Shown in Black/Dark Gray: Millenia™ ADP

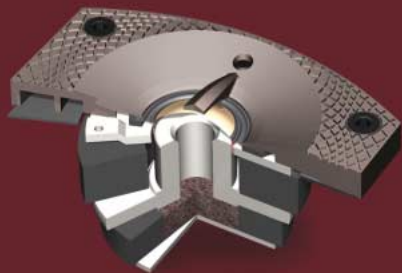


## STUDIO SERIES

**P**aradigm® Reference Studio speakers set a performance benchmark in high-end sound. They offer the highest standard of technological excellence, providing breathtaking musical reproduction that captures the very essence of the original sound.

Equally important is their performance in home theater. Movie soundtracks are a complex mix of dialog, music and action effects. This requires a level of articulation and spatial representation that few movie theaters are capable of reproducing. Studio speakers exceed typical high-end home theater sound by expanding the sheer size, scale and dynamics of the acoustic soundstage. While listening to a Paradigm® Reference Studio system, *The Perfect Vision* magazine put it best: "It's just like being at the movies—except the sound is a lot better."\*

*\*Nicholas Bedworth, The Perfect Vision on the Studio 100 system*







## High-Frequency Drive Units

Designed and made by Paradigm, these remarkable drivers exhibit astonishing timbral clarity and transparency, otherwise associated with the very best electrostatic or ribbon designs. They are exceptionally smooth, detailed and free of any spurious resonances.

- **G-PAL™ Gold-Anodized Pure-Aluminum Domes:**

Exceptionally rigid low-mass domes with treated textile suspensions ensure remarkably uniform and instantaneous power response. Elevated position of the dome provides better “air” and frequency response that is smooth, pure and clear.

- **Die-Cast Aluminum WaveGuide™ Chassis and Phase-Alignment Bridge:**  
Promote maximally flat response, wide dispersion and accurate phase across a wide listening window.

- **High-Pressure Die-Cast Aluminum Chassis:**

Eliminate mechanical flexing and ringing and provide a heatsink for superior power handling.

- **Oversize Die-Cast Aluminum Damping Chambers:**

Provide smooth, extended lower-frequency response.

- **Dual High-Power Magnets:**

Powerful ferrite-ceramic magnets promote extremely high energy in the magnetic gap and increase overall thermal mass for greater power handling.

- **Advanced Motor Structures:**

High-temperature multi-layer voice coils and ventilated Apical™ formers ensure superb accuracy and reliability, as well as exceptionally linear response regardless of cone excursion.

## Midrange, Bass/Midrange, Bass Drive Units

Also designed and made by Paradigm, these powerful, highly refined drivers are virtually free of unwanted vibrational resonances, cone standing waves and micro distortions. They offer stunning midrange clarity, superb resolution of inner details and outstanding bass definition and dynamics.

- **S-PAL™ Satin-Anodized Pure-Aluminum Midrange and Bass/Midrange Cones:**

Very high stiffness-to-mass ratio and outstanding internal damping. The result is extraordinary midrange clarity, superb extended bass response and tremendous freedom from unwanted resonances and distortions.

- **Advanced Mineral-Filled Polypropylene Bass Cones:**

Highly damped and tremendously rigid, they provide tight, well-defined low-frequency response with a weight and authority that does justice to even the most challenging music and movie material.

- **Heatsinks and AVS™ Airflow Ventilation System Cooling:**

Promote high power handling, exceptionally low distortion and greater reliability.

- **High-Pressure Die-Cast Aluminum Chassis:**

Control mechanical flexing and ringing and since aluminum is non-magnetic, the possibility of magnetic loss is eliminated.

- **Satin-Anodized Solid-Aluminum Phase Plugs:**

Promote better airflow for improved cooling and increased power handling while fostering extended frequency response. Critically shaped to further contribute to the exceptionally accurate phase response and wide dispersion.

- **Advanced Synthetic Butyl Suspensions:**

High-hysteresis and progressive damping isolate and eliminate “edge-hole” distortion, a major form of distortion that occurs when the cone’s suspension begins to resonate in an uncontrolled manner.

- **Oversize Die-Cast Aluminum Rear Damping Chambers:**

Asymmetrically tapered shape eliminates internal standing waves.

- **Oversize Magnet Assemblies with Symmetrical Focused Field Geometry:**

Ensure low distortion and unparalleled linearity even under extreme conditions.

- **Advanced Motor Structures:**

High-temperature multi-layer voice coils with ventilated Apical™ formers provide superb accuracy and reliability and excellent linear response.

**STUDIO SERIES** (continued)



Shown in Rosenut: Studio 100, Studio CC-690, Seismic™ 12



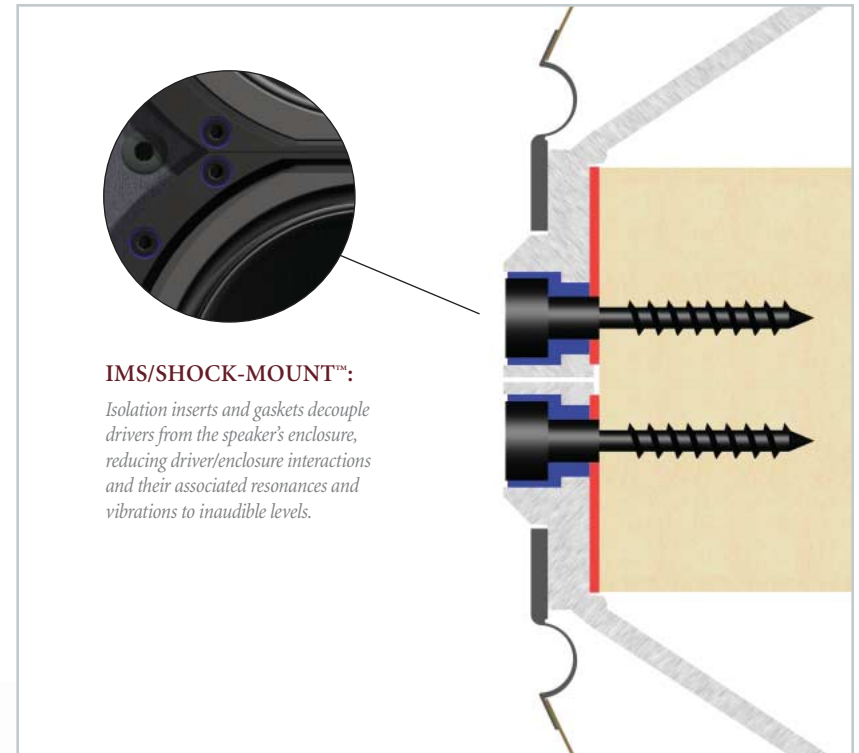
Unique butyl-rubber IMS/SOCK-MOUNT™ driver fastening system found on all Studio Series drivers is a progressive system of critically placed isolation inserts and gaskets that decouple drivers from the speaker enclosure itself. This leading-edge “baffle-less” technology reduces driver/enclosure interactions and their associated enclosure resonances and vibrations to inaudible levels.

Medium Density Fiberboard (MDF) is used throughout our Paradigm® Reference Studio cabinets, enhanced by a choice of three elegant finishes—Cherry, Rosenut and Black Ash.

Bass efficiency and minimum turbulence distortion for cleaner and more articulate bass response.

Elegant, softly sculpted grilles are designed to fit flush with drivers, while their soft outer edges eliminate reflective edges. This anti-diffraction design further contributes to the clarity and extraordinary spaciousness evident in the performance of Paradigm® Reference Studio speakers.

Outrigger feet on floorstanding and center-channel models are designed for added stability and refined visual appeal. Optional spikes are included with floorstanding models.



## SA SERIES IN-WALL/IN-CEILING

**A**s a recognized leader in high-end sound, Paradigm® has what it takes to build the finest in-wall/in-ceiling speakers. The magnificent Paradigm® Reference SA Series is in a high-end class of its own. With its unprecedented timbral accuracy, stunning dimensional imaging and striking bass articulation, the SA Series is unmatched in providing the ultimate in high-end, in-wall and in-ceiling sound!

Attaining true high-end performance from in-wall speakers presents a tremendous engineering challenge. While a speaker in a wall may be aesthetically pleasing, acoustically a wall is less than ideal. There is a plethora of very expensive in-wall speaker introductions, each promoting their latest design wizardry; but beyond the hype, they rarely come close to authentic high-end sound.

Well-designed high-end speakers have solid enclosures. Paradigm® Reference enclosures are incredibly rigid and solid, not only controlling unwanted cabinet resonances and colorations but essentially eliminating them. By comparison, a wall is flexible which means uncontrolled resonances and higher distortion—bass sounds bloated with poor definition and midrange neutrality, clarity and imaging all suffer.

### Ultra-Rigid™ Mounting

To overcome the wall's flexibility, SA Series speakers have unique Ultra-Rigid™ die-cast aluminum chassis and mounting brackets (see opposite page). Together they sandwich and stiffen the wall, greatly increasing its rigidity. Unwanted resonances and distortions are dramatically reduced. Any that remain can then be effectively eliminated with proper installation by a qualified installer. (See your Dealer for more information.)





*"OUTSTANDING ... exceptionally well balanced ... three-dimensional soundstage ... keen sense of space and presence."*

*- Gary Altunian, The Perfect Vision on the SA-35*



Shown: SA-35



## Paradigm® VC-150 High-End Volume Control

A true high-end design that provides vastly superior signal delivery with exceptionally flat frequency response and ultra-low distortion.

- Stereo design
- Impedance matching (allows safe operation with any amplifier)
- Connects up to 16 pairs of speakers to a single amplifier
- Suitable for amplifiers up to 150 watts
- Total attenuation of -52 dB
- Frequency response: 20 Hz – 20 kHz, +1 / -0.5 dB
- Accommodates up to 14-gauge wire
- Easy-connect™ locking speaker terminal block
- Noise-free operation (12 volume positions including off)
- Fits into a single gang junction box with 2-9/16" depth (or more)
- Removable plastic decora insert with integrated knob
- Splined shaft allowing the knob to be positioned as required
- 10-year limited warranty



Shown: SA-15R



Shown in Polished Aluminum: Millenia™ 300, Millenia™ 30



## SPECIFICATIONS



www.paradigm.com



**Millenia™ 20**



**Millenia™ 30**



**Millenia™ 20 Trio**

<b>Design</b>	5-driver, 2-way acoustic suspension, MagneShield™, LCR, on-wall / stand / shelf-mounted	5-driver, 2-way acoustic suspension, MagneShield™, LCR, on-wall / shelf-mounted	9-driver, 3-channel, 2-way acoustic suspension, MagneShield™, on-wall / shelf-mounted
<b>Crossover(s)</b>	2nd-order electro-acoustic at 2.0 kHz	2nd-order electro-acoustic at 2.0 kHz	2nd-order electro-acoustic at 2.0 kHz, 2nd-order electro-acoustic at 800 Hz (bass drivers on Left and Right channels)
<b>High-Frequency Driver(s)</b>	25-mm (1 in) S-PAL™ dome, ferro-fluid damped / cooled, die-cast heatsink chassis	25-mm (1 in) S-PAL™ dome, ferro-fluid damped / cooled, die-cast heatsink chassis	Three 25-mm (1 in) S-PAL™ domes, ferro-fluid damped / cooled, die-cast chassis
<b>Bass/Midrange Driver(s) (Midrange for ADP)</b>	Two 115-mm (4-1/2 in) MLP™ cones, 25-mm (1 in) dual-layer voice coils, HTD™ system die-cast heatsink chassis	Two 140-mm (5-1/2 in) MLP™ cones, 25-mm (1 in) dual-layer voice coils, HTD™ system die-cast heatsink chassis	Four 115-mm (4-1/2 in) MLP™ cones, 25-mm (1 in) dual-layer voice coils, HTD™ system die-cast heatsink chassis
<b>Bass Driver(s)</b>	Two 115-mm (4-1/2 in) mineral-filled polypropylene cones, 38-mm (1-1/2 in) dual-layer voice coils, HTD™ system die-cast heatsink chassis	Two 140-mm (5-1/2 in) mineral-filled polypropylene cones, 25-mm (1 in) dual-layer voice coils, HTD™ system die-cast heatsink chassis	Two 115-mm (4-1/2 in) mineral-filled polypropylene cones, 25-mm (1 in) dual-layer voice coils, HTD™ system die-cast heatsink chassis
<b>Low-Frequency Extension*</b>	77 Hz (DIN)*	76 Hz (DIN)*	80 Hz (DIN)*
<b>Frequency Response: <i>On-Axis</i> 30° <i>Off-Axis</i></b>	±2 dB from 110 Hz – 20 kHz ±2 dB from 110 Hz – 18 kHz	±2 dB from 110 Hz – 20 kHz ±2 dB from 110 Hz – 18 kHz	±2 dB from 120 Hz – 20 kHz ±2 dB from 120 Hz – 18 kHz
<b>Sensitivity – Room/Anechoic</b>	92 dB / 89 dB	94 dB / 91 dB	90 dB / 87 dB
<b>Suitable Amplifier Power Range</b>	15 – 150 watts	15 – 200 watts	15 – 150 watts
<b>Maximum Input Power†</b>	110 watts	130 watts	90 watts
<b>Impedance</b>	Compatible with 8 ohms	Compatible with 8 ohms	Compatible with 8 ohms
<b>Internal Volume</b>	4.5 L / 0.16 cu ft	9.5 L / 0.33 cu ft	7.7 L / 0.27 cu ft
<b>Dimensions: Enclosure (h x w x d) (Height for 200/300 includes base/spikes/cones) Glass Base (w x d)</b>	65.8 cm x 13.0 cm x 11.7 cm 25-7/8 in x 5-1/8 in x 4-5/8 in n/a	90.0 cm x 15.1 cm x 13.7 cm 35-7/8 in x 5-7/8 in x 5-3/8 in n/a	13.0 cm x 105.0 cm x 12.0 cm 5-1/8 in x 41-1/8 in x 4-5/8 in n/a
<b>Weight (Unpacked)</b>	5.7 kg / 12.6 lb each	8 kg / 17.6 lb each	8.2 kg / 18 lb each
<b>Finishes</b>	Polished Aluminum • Black Chrome	Polished Aluminum • Black Chrome	Polished Aluminum • Black Chrome
<b>Speaker Stand(s)</b>	LS-18	n/a	n/a



### Millenia™ 200

6-driver, 2-1/2-way bass reflex, MagneShield™, floorstanding design

2nd-order electro-acoustic at 2.0 kHz, 2nd-order electro-acoustic at 800 Hz (bass drivers)

25-mm (1 in) S-PAL™ dome, ferro-fluid damped / cooled, die-cast chassis

Two 115-mm (4-1/2 in) MLP™ cones, 25-mm (1 in) dual-layer voice coils, HTD™ system die-cast heatsink chassis

Three 115-mm (4-1/2 in) mineral-filled polypropylene cones, 25-mm (1 in) dual-layer voice coils, HTD™ system die-cast heatsink chassis

55 Hz (DIN)\*

±2 dB from 87 Hz – 20 kHz

±2 dB from 87 Hz – 18 kHz

92 dB / 89 dB

15 – 150 watts

130 watts

Compatible with 8 ohms

10.7 L / 0.38 cu ft

120.0 cm x 13.0 cm x 15.0 cm

47-1/4 in x 5-1/8 in x 5-7/8 in

23.8 cm x 22.8 cm / 9 in x 9-3/8 in

23.2 kg / 51.2 lb per pair

Polished Aluminum • Black Chrome

n/a



### Millenia™ 300

6-driver, 2-1/2-way bass reflex, MagneShield™, floorstanding design

2nd-order electro-acoustic at 2.0 kHz, 2nd-order electro-acoustic at 200 kHz (bass drivers)

25-mm (1 in) S-PAL™ dome, ferro-fluid damped / cooled, die-cast chassis

Two 140-mm (5-1/2 in) MLP™ cones, 25-mm (1 in) dual-layer voice coils, HTD™ system die-cast heatsink chassis

Three 140-mm (5-1/2 in) mineral-filled polypropylene cones, 38-mm (1-1/2 in) dual-layer voice coils, HTD™ system die-cast heatsink chassis

54 Hz (DIN)\*

±2 dB from 87 Hz – 20 kHz

±2 dB from 87 Hz – 18 kHz

94 dB / 91 dB

15 – 200 watts

150 watts

Compatible with 8 ohms

16.8 L / 0.59 cu ft

133.3 cm x 15.1 cm x 17.5 cm

52-1/2 in x 5-7/8 in x 6-7/8 in

25.4 cm x 24.1 cm / 10 in x 9-1/2 in

26 kg / 57 lb per pair

Polished Aluminum • Black Chrome

n/a



### Millenia™ ADP

5-driver, 3-way acoustic suspension, cast-aluminum / ABS enclosure, surround / rear

1st-order electro-acoustic at 2.0 kHz, 2nd-order electro-acoustic at 300 Hz (bass driver)

Two 25-mm (1 in) S-PAL™ domes, ferro-fluid damped / cooled, die-cast chassis

Two 102-mm (4 in) MLP™ cones, 38-mm (1-1/2 in) dual-layer voice coils, HTD™ system die-cast heatsink chassis

150-mm (6 in) mineral-filled polypropylene cone, 38-mm (1-1/2 in) dual-layer voice coil, HTD™ system die-cast heatsink chassis

62 Hz (DIN)\*

±2 dB from 95 Hz – 20 kHz

(Reverberant Soundfield)

88 dB / 85 dB

15 – 200 watts

100 watts

Compatible with 8 ohms

5.6 L / 0.2 cu ft

12.7 cm x 30.4 cm x 17.6 cm

8-1/4 in x 12 in x 7 in

n/a

6.0 kg / 13 lb each

Black / Dark Gray • White / Light Silver

GS-30

*\*DIN 45 500. Indicates -3 dB in a typical listening room. †With typical program source, provided the amplifier clips no more than 10% of the time. | Paradigm® stands sold separately, see your Dealer.*



## SPECIFICATIONS



www.paradigm.com



Studio 20



Studio 40



Studio 60

### Design

### Crossover(s)

### High-Frequency Driver(s)

### Midrange Driver(s)

### Bass/Midrange Driver(s)

### Bass Driver(s)

### Low-Frequency Extension\*

### Frequency Response: *On-Axis* *30° Off-Axis*

### Sensitivity – Room/Anechoic

### Suitable Amplifier Power Range

### Maximum Input Power†

### Impedance

### Internal Volume

### Height, Width, Depth

(Heights include spikes or outrigger feet; widths exclude feet)

### Weight (Unpacked)

### Finishes

### Speaker Stand(s)

2-driver, 2-way, bookshelf / stand-mounted

2nd-order electro-acoustic at 2.0 kHz

25-mm (1 in) G-PAL™ dome, ferro-fluid, die-cast heatsink chassis, IMS/SHOCK-MOUNT™

178-mm (7 in) S-PAL™ cone, 38-mm (1-1/2 in) voice coil, AVS™ die-cast heatsink chassis, IMS/SHOCK-MOUNT™

36 Hz (DIN)\*

±2 dB from 54 Hz – 22 kHz  
±2 dB from 54 Hz – 20 kHz

90 dB / 87 dB

15 – 150 watts

100 watts

Compatible with 8 ohms

15 L / 0.5 cu ft

38.1 cm x 21.0 cm x 32.3 cm  
15 in x 8-1/4 in x 12-3/4 in

19.6 kg / 43 lb per pair

Cherry, Rosenut, Black Ash

J-29

3-driver, 2-1/2-way, bookshelf / stand-mounted

2nd-order electro-acoustic at 2.0 kHz, 2nd-order electro-acoustic at 500 Hz (lower bass driver)

25-mm (1 in) G-PAL™ dome, ferro-fluid, die-cast heatsink chassis, IMS/SHOCK-MOUNT™

178-mm (7 in) S-PAL™ cone, 38-mm (1-1/2 in) voice coil, AVS™ die-cast heatsink chassis, IMS/SHOCK-MOUNT™

178-mm (7 in) mineral-filled polypropylene cone, 38-mm (1-1/2 in) voice coil, AVS™ die-cast heatsink chassis, IMS/SHOCK-MOUNT™

36 Hz (DIN)\*

±2 dB from 62 Hz – 22 kHz  
±2 dB from 62 Hz – 20 kHz

92 dB / 89 dB

15 – 180 watts

140 watts

Compatible with 8 ohms

23 L / 0.8 cu ft

55.9 cm x 21 cm x 32.3 cm  
22 in x 8-1/4 in x 12-3/4 in

31.8 kg / 70 lb per pair

Cherry, Rosenut, Black Ash

J-23, S-18, S-22

3-driver, 2-1/2-way, floorstanding

2nd-order electro-acoustic at 2.0 kHz, 2nd-order electro-acoustic at 500 Hz (lower bass driver)

25-mm (1 in) G-PAL™ dome, ferro-fluid, die-cast heatsink chassis, IMS/SHOCK-MOUNT™

178-mm (7 in) S-PAL™ cone, 38-mm (1-1/2 in) voice coil, AVS™ die-cast heatsink chassis, IMS/SHOCK-MOUNT™

178-mm (7 in) mineral-filled polypropylene cone, 38-mm (1-1/2 in) voice coil, AVS™ die-cast heatsink chassis, IMS/SHOCK-MOUNT™

30 Hz (DIN)\*

±2 dB from 46 Hz – 22 kHz  
±2 dB from 46 Hz – 20 kHz

91 dB / 88 dB

15 – 200 watts

150 watts

Compatible with 8 ohms

61 L / 2.2 cu ft

102.9 cm x 21 cm x 43.2 cm  
40-1/2 in x 8-1/4 in x 17 in

63.6 kg / 140 lb per pair

Cherry, Rosenut, Black Ash

n/a



Studio 100

5-driver, 3-way, floorstanding

3rd-order electro-acoustic at 2.0 kHz, 3rd-order electro-acoustic at 300 Hz (bass drivers)

25-mm (1 in) G-PAL™ dome, ferro-fluid, die-cast heatsink chassis, IMS/SHOCK-MOUNT™

178-mm (7 in) S-PAL™ cone, ferro-fluid, 38-mm (1-1/2 in) voice coil, AVS™ die-cast heatsink chassis, IMS/SHOCK-MOUNT™

Three 178-mm (7 in) mineral-filled polypropylene cones, 38-mm (1-1/2 in) voice coils, AVS™ die-cast heatsink chassis, IMS/SHOCK-MOUNT™

28 Hz (DIN)

±2 dB from 44 Hz – 22 kHz  
±2 dB from 44 Hz – 20 kHz

91 dB / 88 dB

15 – 350 watts

210 watts

Compatible with 8 ohms

67 L / 2.4 cu ft

113.0 cm x 21.0 cm x 43.2 cm  
44-1/2 in x 8-1/4 in x 17 in

73.6 kg / 162 lb per pair

Cherry, Rosenut, Black Ash

n/a



Studio CC-590

4-driver, 3-way center channel, MagneShield™

3rd-order electro-acoustic at 2.4 kHz, 3rd-order electro-acoustic at 350 Hz (bass drivers)

25-mm (1 in) G-PAL™ dome, ferro-fluid, die-cast heatsink chassis, IMS/SHOCK-MOUNT™

115-mm (4-1/2 in) S-PAL™ cone, ferro-fluid, 25-mm (1 in) voice coil, AVS™ die-cast heatsink chassis, IMS/SHOCK-MOUNT™

Two 178-mm (7 in) mineral-filled polypropylene cones, 38-mm (1-1/2 in) voice coils, AVS™ die-cast heatsink chassis, IMS/SHOCK-MOUNT™

38 Hz (DIN)

±2 dB from 50 Hz – 20 kHz  
±2 dB from 50 Hz – 18 kHz

90 dB / 87 dB

15 – 200 watts

150 watts

Compatible with 8 ohms

29 L / 1.0 cu ft

24.0 cm x 67.3 cm x 33.0 cm  
9-1/2 in x 26-1/2 in x 13 in

20.5 kg / 45 lb each

Cherry, Rosenut, Black Ash

n/a



Studio CC-690

6-driver, 3-way center channel, MagneShield™

3rd-order electro-acoustic at 2.5 kHz, 3rd-order electro-acoustic at 350 Hz (bass drivers)

25-mm (1 in) G-PAL™ dome, ferro-fluid, die-cast heatsink chassis, IMS/SHOCK-MOUNT™

115-mm (4-1/2 in) S-PAL™ cone, ferro-fluid, 25-mm (1 in) voice coil, AVS™ die-cast heatsink chassis, IMS/SHOCK-MOUNT™

Two 178-mm (7 in) S-PAL™ cones, ferro-fluid, 25-mm (1 in) voice coils, AVS™ die-cast heatsink chassis, IMS/SHOCK-MOUNT™

Two 178-mm (7 in) mineral-filled polypropylene cones, 38-mm (1-1/2 in) voice coils, AVS™ die-cast heatsink chassis, IMS/SHOCK-MOUNT™

38 Hz (DIN)

±2 dB from 53 Hz – 20 kHz  
±2 dB from 53 Hz – 18 kHz

91 dB / 88 dB

15 – 300 watts

200 watts

Compatible with 8 ohms

48 L / 1.7 cu ft

24.0 cm x 91.5 cm x 39.5 cm  
9-1/2 in x 36 in x 15-1/2 in

31.3 kg / 69 lb each

Cherry, Rosenut, Black Ash

n/a



Studio ADP-590

5-driver, 3-way surround / rear

1st-order electro-acoustic at 2.1 kHz, 2nd-order electro-acoustic at 300 Hz (bass drivers)

Two 25-mm (1 in) G-PAL™ domes, ferro-fluid, die-cast heatsink chassis, IMS/SHOCK-MOUNT™

Two 102-mm (4 in) S-PAL™ cones, ferro-fluid, 25-mm (1 in) voice coils, AVS™ die-cast heatsink chassis, IMS/SHOCK-MOUNT™

178-mm (7 in) mineral-filled polypropylene cone, 38-mm (1-1/2 in) voice coil, AVS™ die-cast heatsink chassis, IMS/SHOCK-MOUNT™

60 Hz (DIN)

±2 dB from 85 Hz – 20 kHz  
(reverberant soundfield)

90 dB / 87 dB

15 – 180 watts

130 watts

Compatible with 8 ohms

5.6 L / 0.2 cu ft

22.0 cm x 37.5 cm x 17.0 cm  
8-3/4 in x 14-3/4 in x 6-5/8 in

7.9 kg / 17.5 lb each

Black Ebony, White

J-29

*\*DIN 45 500. Indicates -3 dB in a typical listening room. †With typical program source, provided the amplifier clips no more than 10% of the time. | Paradigm® stands sold separately, see your Dealer.*



## SPECIFICATIONS



www.paradigm.com



SA-10R



SA-15R



SA-15R-SM

<b>Design</b>	2-driver, 2-way in-ceiling / in-wall, GRIP™ chassis / mounting bracket	2-driver, 2-way in-ceiling / in-wall, GRIP™ chassis / mounting bracket	Single speaker system with stereo L / R inputs, 3-driver, 2 x 2-way in-ceiling / in-wall, GRIP™ chassis / mounting bracket
<b>Crossover(s)</b>	3rd-order electro-acoustic at 2.5 kHz	3rd-order electro-acoustic at 2.5 kHz	3rd-order electro-acoustic at 2.5 kHz
<b>High-Frequency Driver(s)</b>	25-mm (1 in) G-PAL™ dome, die-cast heatsink, ferro-fluid	25-mm (1 in) G-PAL™ dome, die-cast heatsink, ferro-fluid	Two 25-mm (1 in) G-PAL™ domes, die-cast heatsink, ferro-fluid
<b>Bass/Midrange Driver(s)</b>	165-mm (6-1/2 in) S-PAL™ cone, 38-mm (1-1/2 in) voice-coil, GRIP™ chassis	210-mm (8 in) S-PAL™ cone 38-mm (1-1/2 in) voice-coil, GRIP™ chassis	Dual 38-mm (1-1/2 in) voice-coils, 210-mm (8 in) S-PAL™ cone, GRIP™ chassis
<b>Bass Driver</b>			
<b>Low-Frequency Extension*</b>	40 Hz (DIN)*	37 Hz (DIN)*	37 Hz (DIN)*
<b>Frequency Response: <i>On-Axis</i> 30° <i>Off-Axis</i></b>	±2 dB from 60 Hz – 22 kHz ±2 dB from 60 Hz – 20 kHz	±2 dB from 58 Hz – 22 kHz ±2 dB from 58 Hz – 20 kHz	±2 dB from 58 Hz – 22 kHz ±2 dB from 58 Hz – 17 kHz
<b>Sensitivity – Room/Anechoic</b>	91 dB / 87 dB	92 dB / 88 dB	92 dB / 88 dB
<b>Suitable Amplifier Power Range</b>	15 – 150 watts	15 – 160 watts	15 – 160 watts Mono; 15 – 80 watts / channel Stereo Input
<b>Maximum Input Power†</b>	90 watts	100 watts	100 watts Mono; 50 watts / channel Stereo Input
<b>Impedance</b>	Compatible with 8 ohms	Compatible with 8 ohms	Compatible with 8 ohms Mono; 4 ohms / channel Stereo Input
<b>Diameter or Height x Width</b>	19.6 cm / 7-3/4 in	22.6 cm / 8-15/16 in	22.6 cm / 8-15/16 in
<b>Minimum Mounting Depth**</b>	8.7 cm / 3-7/16 in	9.0 cm / 3-8/16 in	9.0 cm / 3-8/16 in
<b>Cutout Dimensions: D or H x W</b>	17.2 cm / 6-3/4 in	20.0 cm / 7-7/8 in	20.0 cm / 7-7/8 in
<b>Pre-Construction Bracket</b>	PB-7R (sold separately)	PB-8R (sold separately)	PB-8R (sold separately)
<b>Minimum Internal Volume</b>	12 L / 0.42 cu ft	20 L / 0.70 cu ft	20 L / 0.70 cu ft
<b>Weight (Unpacked)</b>	3.9 kg / 8.6 lb per pair	4.3 kg / 9.5 lb per pair	5.0 kg / 11 lb each
<b>Finish</b>	White, paintable	White, paintable	White, paintable



#### SA-15R-30

2-driver, 2-way in-ceiling, drivers mounted at 30° relative to mounting surface, GRIP™ chassis / mounting bracket

3rd-order electro-acoustic at 2.5 kHz

25-mm (1 in) G-PAL™ dome, die-cast heatsink, ferro-fluid

210-mm (8 in) S-PAL™ cone,  
38-mm (1-1/2 in) voice coil, GRIP™ chassis

37 Hz (DIN)\*

±2 dB from 58 Hz – 22 kHz  
±2 dB from 58 Hz – 17 kHz

92 dB / 88 dB

15 – 160 watts

100 watts

Compatible with 8 ohms

29.6 cm / 11-5/8 in

14.3 cm / 5-5/8 in

27.0 cm / 10-5/8 in

PB-10R (sold separately)

20 L / 0.70 cu ft

2.9 kg / 6.4 lb each

White, paintable



#### SA-25

2-driver, 2-way in-wall / in-ceiling, die-cast chassis / mounting bracket

3rd-order electro-acoustic at 2.0 kHz

25-mm (1 in) G-PAL™ dome, die-cast heatsink, ferro-fluid

165-mm (6-1/2 in) S-PAL™ cone,  
38-mm (1-1/2 in) voice coil, die-cast chassis

39 Hz (DIN)\*

±2 dB from 58 Hz – 22 kHz  
±2 dB from 58 Hz – 20 kHz

92 dB / 88 dB

15 – 160 watts

110 watts

Compatible with 8 ohms

28.2 cm x 19.4 cm / 11-1/8 in x 7-11/16 in

7.4 cm / 2-15/16 in

26.0 cm x 17.2 cm / 10-1/4 in x 6-3/4 in

PB-7x10 (sold separately)

12 L / 0.42 cu ft

7.1 kg / 15.7 lb per pair

White, paintable



#### SA-30

2-driver, 2-way in-wall / in-ceiling, die-cast chassis / mounting bracket

3rd-order electro-acoustic at 2.0 kHz

25-mm (1 in) G-PAL™ dome, die-cast heatsink, ferro-fluid

210-mm (8 in) S-PAL™ cone,  
38-mm (1-1/2 in) voice coil, die-cast chassis

35 Hz (DIN)\*

±2 dB from 48 Hz – 22 kHz  
±2 dB from 48 Hz – 20 kHz

93 dB / 89 dB

15 – 180 watts

120 watts

Compatible with 8 ohms

31.4 cm x 22.7 cm / 12-3/8 in x 8-15/16 in

7.4 cm / 2-15/16 in

29.3 cm x 20.6 cm / 11-1/2 in x 8-3/16 in

PB-8x12 (sold separately)

20 L / 0.70 cu ft

7.6 kg / 16.7 lb per pair

White, paintable



#### SA-35

3-driver, 2-1/2-way in-wall / in-ceiling, die-cast chassis / mounting bracket

3rd-order electro-acoustic at 2.0 kHz, 2nd-order electro-acoustic at 500 Hz (lower bass driver)

25-mm (1 in) G-PAL™ dome, die-cast heatsink, ferro-fluid

210-mm (8 in) S-PAL™ cone,  
38-mm (1-1/2 in) voice coil, die-cast chassis

210-mm (8 in) mineral-filled polypropylene cone, 38-mm (1-1/2 in) voice coil, die-cast chassis

34 Hz (DIN)\*

±2 dB from 46 Hz – 22 kHz  
±2 dB from 46 Hz – 20 kHz

96 dB / 92 dB

15 – 250 watts

180 watts

Compatible with 8 ohms

51.0 cm x 23.1 cm / 20-1/16 in x 9-1/16 in

7.6 cm / 3 in

48.6 cm x 20.7 cm / 19-1/8 in x 8-3/16 in

PB-8x19 (sold separately)

40 L / 1.4 cu ft

14.2 kg / 31.3 lb per pair

White, paintable

*\*DIN 45 500. Indicates -3 dB in a typical listening room. †With typical program source, provided the amplifier clips no more than 10% of the time. \*\*Depth required is the distance behind 1/2" drywall or similar material.*



## PREMIUM FINISHES

### Millenia™ Series



Polished Aluminum

Black Chrome

White / Light Silver  
(ADP only)

Black / Dark Gray  
(ADP only)

### Studio Series / Seismic™ Series / Servo-15



Cherry

Rosenut

Black Ash  
(Seismic™ only available  
in this finish)

White (ADP only)

Black Ebony (ADP only)

## RECOMMENDED SYSTEMS

Fronts	Type	Center	Surrounds	Rears	Subwoofer
Studio 20	Bookshelf / Stand-Mounted	CC-590	ADP-590	ADP-590	Seismic™ 10
Studio 40	Bookshelf / Stand-Mounted	CC-590	ADP-590	ADP-590	Seismic™ 12
Studio 60	Floorstanding	CC-590 / CC-690	ADP-590	ADP-590	Seismic™ 12 / Servo-15
Studio 100	Floorstanding	CC-690	ADP-590	ADP-590	Servo-15 (larger rooms, two)
Millenia™ 20	On-Wall / Stand / Shelf-Mounted	Millenia™ 20	Millenia™ ADP	Millenia™ ADP	Seismic™ 10
Millenia™ 20 Trio	On-Wall / Shelf-Mounted	Included	Millenia™ ADP	Millenia™ ADP	Seismic™ 10
Millenia™ 30	On-Wall / Shelf-Mounted	Millenia™ 30	Millenia™ ADP	Millenia™ ADP	Seismic™ 12
Millenia™ 200	Floorstanding	Millenia™ 20	Millenia™ ADP	Millenia™ ADP	Seismic™ 10
Millenia™ 300	Floorstanding	Millenia™ 30	Millenia™ ADP	Millenia™ ADP	Seismic™ 12
SA-25	In-Wall / In-Ceiling	SA-25	SA-10R, SA-25	SA-10R, SA-25	Seismic™ 10
SA-30	In-Wall / In-Ceiling	SA-30	SA-15R-30, SA-30	SA-15R-30, SA-30	Seismic™ 12
SA-35	In-Wall / In-Ceiling	SA-35	SA-15R-30, SA-35	SA-15R-30, SA-35	Seismic™ 12 / Servo-15
SA-15R-30	In-Ceiling	SA-15R-30	SA-15R-30, SA-30	SA-15R-30, SA-30	Seismic™ 10 / 12

[www.paradigm.com](http://www.paradigm.com)

Paradigm®, Paradigm® Reference and all associated proprietary and patented designs and technologies are registered trademarks of Paradigm Electronics Inc. Copyright © Paradigm Electronics Inc. All rights reserved. All other trademarks are the property of their respective owner(s). Paradigm Electronics Inc. reserves the right to change specifications and/or features without notice as design improvements are incorporated.

**Paradigm Electronics Inc.**

In U.S.: MPO Box 2410, Niagara Falls, NY 14302  
T • (905) 632-0180

In Canada: 205 Annagem Blvd., Mississauga, ON L5T 2V1  
T • (905) 564-1994

For distribution information outside the U.S. and Canada contact:  
**Paradigm Export Division**  
T • (905) 564-1994 | F • (905) 564-8726

Catalog photography by Roy Timm, Wavelength Co. Ltd.; Jason Hartog Photography. Furniture courtesy of Stoney Creek Furniture. REFCATV5.0 Printed in Canada